

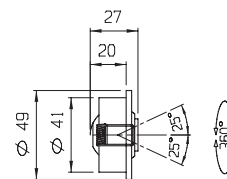
ADJUSTABLE
SPOT
LIGHTS



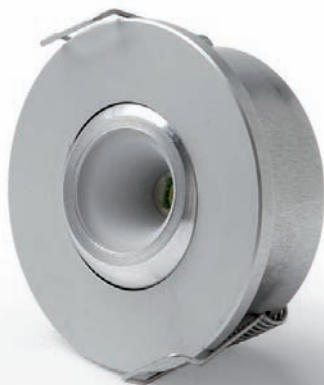
2100

PRODOTTO / PRODUCT

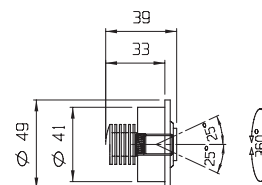
2100-01



Diametro foro / Hole diameter **42-44 mm**
Fissaggio con molle / Fixing by springs



2100-02



Diametro foro / Hole diameter **42-44 mm**
Fissaggio con molle / Fixing by springs

ADJUSTABLE
SPOT
LIGHTS

LEDS No.: 1

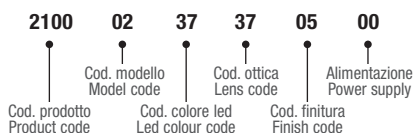
OTTICA / LENS



IP 40

MODELLO MODEL	COLORE LED LED COLOUR	OTTICA LENS	FINITURA FINISH	ALIMENTAZIONE POWER SUPPLY	mA	Watt	Lm	Note
01 - Short	01 -	31 - 8°	01 -	00 - no driver	350	1,3	90	
	02 -	32 - 25°	05 -					
	03 -	35 - 40°						
	04 -	37 - 60°						
	05 -							
	06 -							
	08 -							
	09 -							
	02 - Long	01 -	31 - 8°	01 -	00 - no driver	350	1,3	90
02 -		32 - 25°	05 -	00 - no driver	500	1,9	119	
03 -		35 - 40°						
04 -		37 - 60°						
05 -								
06 -								
08 -								
09 -								
37 -					00 - RGB no driver	350	4	

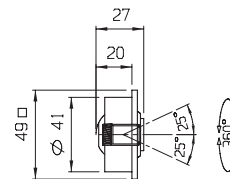
ESEMPIO COMPOSIZIONE CODICE
CODE COMPOSITION EXAMPLE



2101

PRODOTTO / PRODUCT

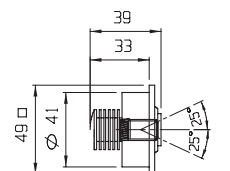
2101-01



Diametro foro / Hole diameter **42-44 mm**
Fissaggio con molle / Fixing by springs



2101-02

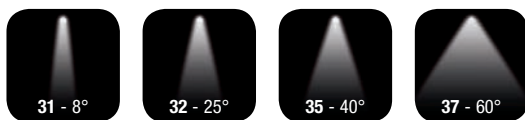


Diametro foro / Hole diameter **42-44 mm**
Fissaggio con molle / Fixing by springs

ADJUSTABLE
SPOT
LIGHTS

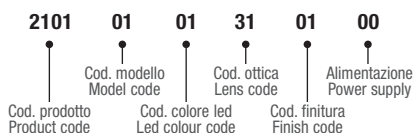
LEDS No.: 1

OTTICA / LENS



MODELLO MODEL	COLORE LED LED COLOUR	OTTICA LENS	FINITURA FINISH	ALIMENTAZIONE POWER SUPPLY	mA	Watt	Lm	Note	
01 - Short	01 -	31 - 8°	01 -	00 - no driver	350	1,3	90		
	02 -	32 - 25°	05 -						
	03 -	35 - 40°							
	04 -	37 - 60°							
	05 -								
	06 -								
	08 -								
	09 -								
	02 - Long	01 -	31 - 8°	01 -	00 - no driver	350	1,3	90	
02 -		32 - 25°	05 -	00 - no driver	500	1,9	119		
03 -		35 - 40°							
04 -		37 - 60°							
05 -									
06 -									
08 -									
09 -									
37 -					00 - RGB no driver	350	4		

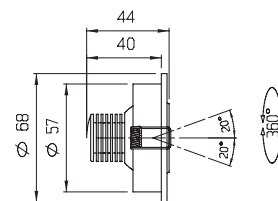
ESEMPIO COMPOSIZIONE CODICE
CODE COMPOSITION EXAMPLE



2102

PRODOTTO / PRODUCT

2102-02



Diametro foro / Hole diameter **59-61 mm**
 Accessorio controcassa cod. **100000**
 Outer casing accessory, code **100000**
 Fissaggio con molle / Fixing by springs

ADJUSTABLE
SPOT
LIGHTS

LEDS No.: 3

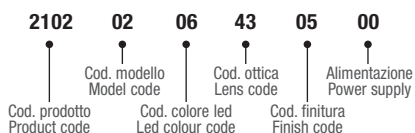


OTTICA / LENS



MODELLO MODEL	COLORE LED LED COLOUR	OTTICA LENS	FINITURA FINISH	ALIMENTAZIONE POWER SUPPLY	mA	Watt	Lm	Note
02 - Long	01 - 02 - 03 - 04 - 05 - 06 - 08 - 09 -	43 - 55°	01 - 05 -	00 - no driver	350	3,8	270	

ESEMPIO COMPOSIZIONE CODICE
CODE COMPOSITION EXAMPLE



2104

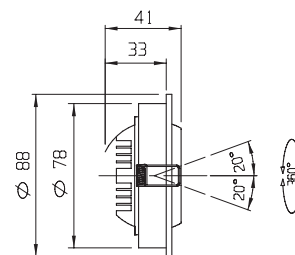
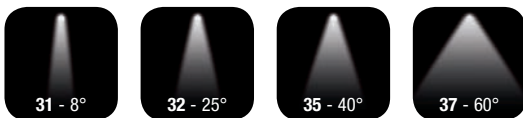
PRODOTTO / PRODUCT

ADJUSTABLE
SPOT
LIGHTS

LEDS No.: 3

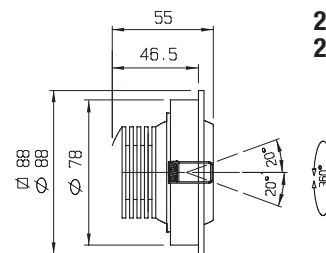


OTTICA / LENS



2104-01

Diametro foro / Hole diameter 80-82 mm
Fissaggio con molle / Fixing by springs



2104-02
2104-23

Diametro foro / Hole diameter 80-82 mm
Fissaggio con molle / Fixing by springs



MODELLO MODEL	COLORE LED LED COLOUR	OTTICA LENS	FINITURA FINISH	ALIMENTAZIONE POWER SUPPLY	mA	Watt	Lm	Note
01 - Short - Round	01 -	31 - 8°	01 -	00 - no driver	350	3,8	270	
	02 -	32 - 25°	05 -	05 - 12-24 VDC	350	3,8	270	DIM
	03 -	35 - 40°						
	04 -	37 - 60°						
	05 -							
	06 -							
	08 -							
	09 -							
	07 -							
02 - Long - Round 23 - Long - Square	01 -	31 - 8°	01 -	00 - no driver	350	3,8	270	
	02 -	32 - 25°	05 -	00 - no driver	500	5,7	356	
	03 -	35 - 40°		00 - no driver	700	8,3	456	
	04 -	37 - 60°		05 - 12-24 VDC	350	3,8	270	DIM
	05 -			06 - 12-24 VDC	500	5,7	356	DIM
	06 -			07 - 12-24 VDC	700	8,3	456	DIM
	08 -							
09 -								
	07 -			18 - RGB 24 VDC	700	8,3		

ESEMPIO COMPOSIZIONE CODICE
CODE COMPOSITION EXAMPLE

2104 02 07 37 05 18
 Cod. prodotto / Product code Cod. modello / Model code Cod. colore led / Led colour code Cod. ottica / Lens code Cod. finitura / Finish code Alimentazione / Power supply

2104-23

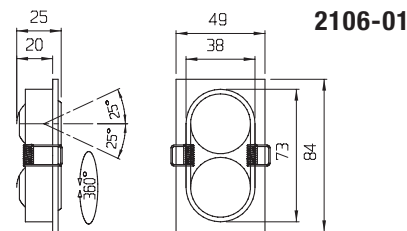


2106

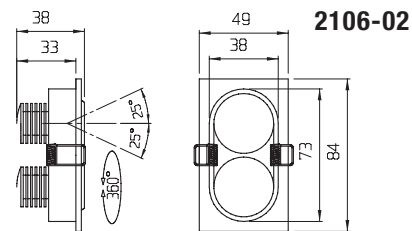
PRODOTTO / PRODUCT

ADJUSTABLE
SPOT
LIGHTS

LEDS No.: 2

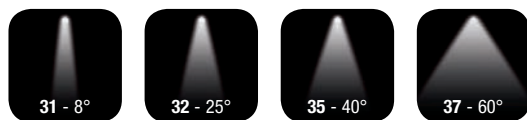


Foro / Hole **40-42x75-77 mm**
Fissaggio con molle / Fixing by springs



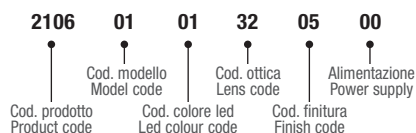
Foro / Hole **40-42x75-77 mm**
Fissaggio con molle / Fixing by springs

OTTICA / LENS



MODELLO MODEL	COLORE LED LED COLOUR	OTTICA LENS	FINITURA FINISH	ALIMENTAZIONE POWER SUPPLY	mA	Watt	Lm	Note
01 - Short	01 -	31 - 8°	01 -	00 - no driver	350	2,6	180	
	02 -	32 - 25°	05 -					
	03 -	35 - 40°						
	04 -	37 - 60°						
	05 -							
	06 -							
	08 -							
	09 -							
	02 - Long	01 -	31 - 8°	01 -	00 - no driver	350	2,6	180
02 -		32 - 25°	05 -	00 - no driver	500	3,8	238	
03 -		35 - 40°						
04 -		37 - 60°						
05 -								
06 -								
08 -								
09 -								

ESEMPIO COMPOSIZIONE CODICE
CODE COMPOSITION EXAMPLE

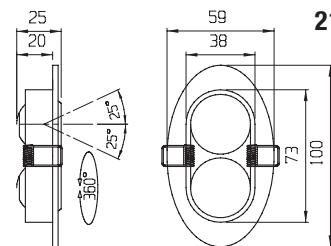


2107

PRODOTTO / PRODUCT

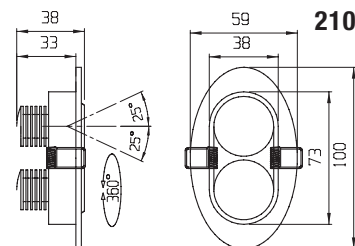
ADJUSTABLE
SPOT
LIGHTS

LEDS No.: 2



2107-01

Foro / Hole **40-42x75-77 mm**
Fissaggio con molle / Fixing by springs



2107-02

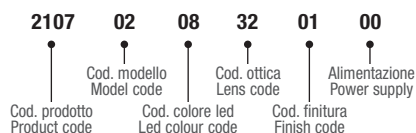
Foro / Hole **40-42x75-77 mm**
Fissaggio con molle / Fixing by springs

OTTICA / LENS



MODELLO MODEL	COLORE LED LED COLOUR	OTTICA LENS	FINITURA FINISH	ALIMENTAZIONE POWER SUPPLY	mA	Watt	Lm	Note
01 - Short	01 -	31 - 8°	01 -	00 - no driver	350	2,6	180	
	02 -	32 - 25°	05 -					
	03 -	35 - 40°						
	04 -	37 - 60°						
	05 -							
	06 -							
	08 -							
	09 -							
	02 - Long	01 -	31 - 8°	01 -	00 - no driver	350	2,6	180
02 -		32 - 25°	05 -	00 - no driver	500	3,8	238	
03 -		35 - 40°						
04 -		37 - 60°						
05 -								
06 -								
08 -								
09 -								

ESEMPIO COMPOSIZIONE CODICE
CODE COMPOSITION EXAMPLE

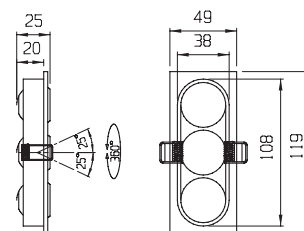


2108

PRODOTTO / PRODUCT

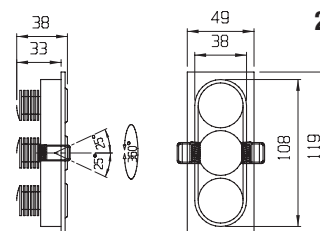
ADJUSTABLE
SPOT
LIGHTS

LEDS No.: 3



2108-01

Foro / Hole **40-42x110-112 mm**
Fissaggio con molle / Fixing by springs



2108-02

Foro / Hole **40-42x110-112 mm**
Fissaggio con molle / Fixing by springs

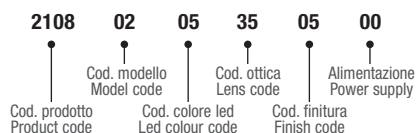
OTTICA / LENS



IP 40

MODELLO MODEL	COLORE LED LED COLOUR	OTTICA LENS	FINITURA FINISH	ALIMENTAZIONE POWER SUPPLY	mA	Watt	Lm	Note
01 - Short	01 -	31 - 8°	01 -	00 - no driver	350	3,8	270	
	02 -	32 - 25°	05 -					
	03 -	35 - 40°						
	04 -	37 - 60°						
	05 -							
	06 -							
	08 -							
	09 -							
	02 - Long	01 -	31 - 8°	01 -	00 - no driver	350	3,8	270
02 -		32 - 25°	05 -	00 - no driver	500	5,7	356	
03 -		35 - 40°						
04 -		37 - 60°						
05 -								
06 -								
08 -								
09 -								

ESEMPIO COMPOSIZIONE CODICE
CODE COMPOSITION EXAMPLE



2109

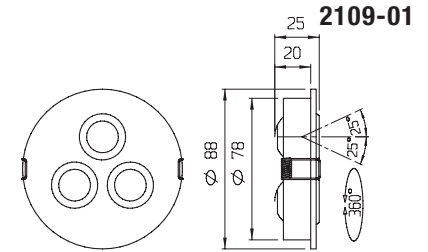
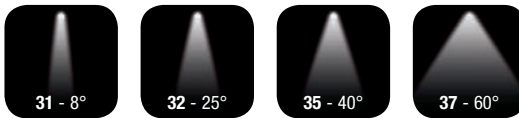
PRODOTTO / PRODUCT

ADJUSTABLE
SPOT
LIGHTS

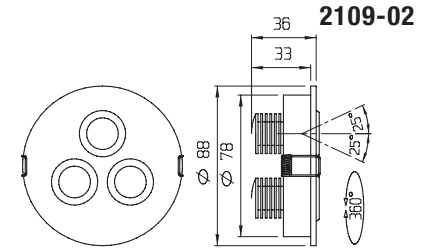
LEDS No.: 3



OTTICA / LENS



Diametro foro / Hole diameter **80-82 mm**
Fissaggio con molle / Fixing by springs



Diametro foro / Hole diameter **80-82 mm**
Fissaggio con molle / Fixing by springs

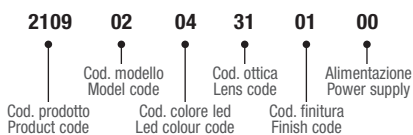


MODELLO
MODEL

01 - Short

MODELLO MODEL	COLORE LED LED COLOUR	OTTICA LENS	FINITURA FINISH	ALIMENTAZIONE POWER SUPPLY	mA	Watt	Lm	Note
01 - Short	01 -	31 - 8°	01 -	00 - no driver	350	3,8	270	
	02 -	32 - 25°	05 -					
	03 -	35 - 40°						
	04 -	37 - 60°						
	05 -							
	06 -							
	08 -							
	09 -							
	02 - Long	01 -	31 - 8°	01 -	00 - no driver	350	3,8	270
02 -		32 - 25°	05 -	00 - no driver	500	5,7	356	
03 -		35 - 40°						
04 -		37 - 60°						
05 -								
06 -								
08 -								
09 -								

ESEMPIO COMPOSIZIONE CODICE
CODE COMPOSITION EXAMPLE

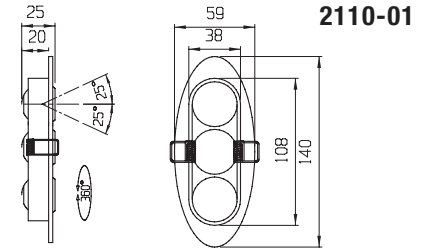


2110

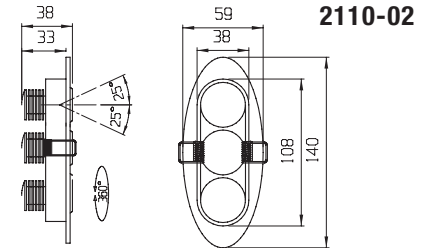
PRODOTTO / PRODUCT

ADJUSTABLE
SPOT
LIGHTS

LEDS No.: 3

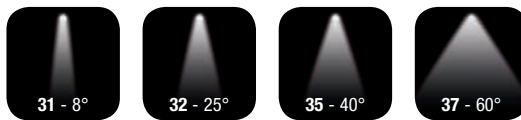


2110-01
Foro / Hole 40-42x110-112 mm
Fissaggio con molle / Fixing by springs



2110-02
Foro / Hole 40-42x110-112 mm
Fissaggio con molle / Fixing by springs

OTTICA / LENS



MODELLO
MODEL

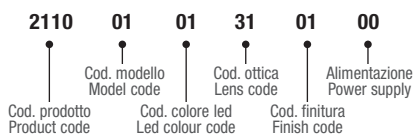
01 - Short

MODELLO MODEL	COLORE LED LED COLOUR	OTTICA LENS	FINITURA FINISH	ALIMENTAZIONE POWER SUPPLY	mA	Watt	Lm	Note
01 - Short	01 -	31 - 8°	01 -	00 - no driver	350	3,8	270	
	02 -	32 - 25°	05 -					
	03 -	35 - 40°						
	04 -	37 - 60°						
	05 -							
	06 -							
	08 -							
	09 -							

02 - Long

02 - Long	01 -	31 - 8°	01 -	00 - no driver	350	3,8	270	
	02 -	32 - 25°	05 -	00 - no driver	500	5,7	356	
	03 -	35 - 40°						
	04 -	37 - 60°						
	05 -							
	06 -							
	08 -							
	09 -							

ESEMPIO COMPOSIZIONE CODICE
CODE COMPOSITION EXAMPLE



2111

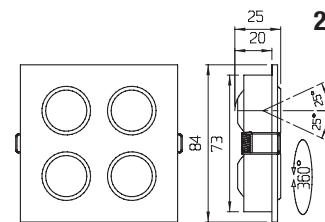
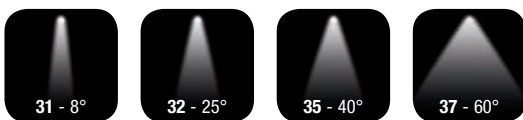
PRODOTTO / PRODUCT

ADJUSTABLE
SPOT
LIGHTS

LEDS No.: 4

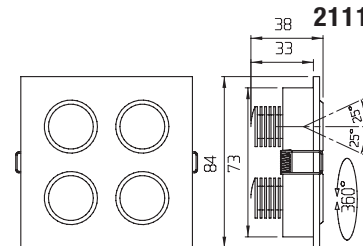


OTTICA / LENS



2111-01

Foro / Hole **75-77x75-77 mm**
Fissaggio con molle / Fixing by springs
Accessorio installazione a soffitto **1035-00**
Ceiling installation kit **1035-00**



2111-02

Foro / Hole **75-77x75-77 mm**
Fissaggio con molle / Fixing by springs
Accessorio installazione a soffitto **1035-00**
Ceiling installation kit **1035-00**



MODELLO MODEL	COLORE LED LED COLOUR	OTTICA LENS	FINITURA FINISH	ALIMENTAZIONE POWER SUPPLY	mA	Watt	Lm	Note
01 - Short	01 -	31 - 8°	01 -	00 - no driver	350	5,1	360	
	02 -	32 - 25°	05 -					
	03 -	35 - 40°						
	04 -	37 - 60°						
	05 -							
	06 -							
	08 -							
	09 -							
	02 - Long	01 -	31 - 8°	01 -	00 - no driver	350	5,1	360
02 -		32 - 25°	05 -	00 - no driver	500	7,6	475	
03 -		35 - 40°						
04 -		37 - 60°						
05 -								
06 -								
08 -								
09 -								

ESEMPIO COMPOSIZIONE CODICE
CODE COMPOSITION EXAMPLE

2111 02 02 32 05 00
 Cod. prodotto Model code
 Cod. colore led Led colour code
 Cod. ottica Lens code
 Cod. finitura Finish code
 Alimentazione Power supply

2111-01+1035-00



Accessorio soffitto: **103500**
Accessory ceiling fixing: **103500**



rigel

2112

PRODOTTO / PRODUCT



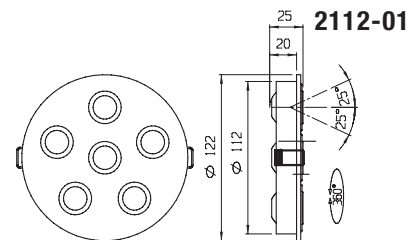
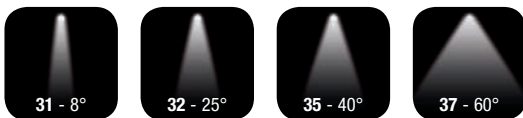
INSTALLAZIONE INSTALLATION NOTES

ADJUSTABLE
SPOT
LIGHTS

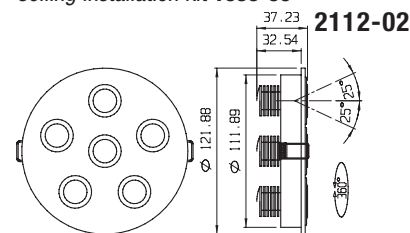
LEDS No.: 6



OTTICA / LENS



Diametro foro / Hole diameter **114-116 mm**
Fissaggio con molle / Fixing by springs
Accessorio installazione a soffitto **1036-00**
Ceiling installation kit **1036-00**



Diametro foro / Hole diameter **114-116 mm**
Fissaggio con molle / Fixing by springs
Accessorio installazione a soffitto **1036-00**
Ceiling installation kit **1036-00**



MODELLO MODEL	COLORE LED LED COLOUR	OTTICA LENS	FINITURA FINISH	ALIMENTAZIONE POWER SUPPLY	mA	Watt	Lm	Note
01 - Short	01 -	31 - 8°	01 -	00 - no driver	350	7,7	540	
	02 -	32 - 25°	05 -					
	03 -	35 - 40°						
	04 -	37 - 60°						
	05 -							
	06 -							
	08 -							
	09 -							
	02 - Long	01 -	31 - 8°	01 -	00 - no driver	350	7,7	540
02 -		32 - 25°	05 -	00 - no driver	500	11,4	713	
03 -		35 - 40°						
04 -		37 - 60°						
05 -								
06 -								
08 -								
09 -								

ESEMPIO COMPOSIZIONE CODICE
CODE COMPOSITION EXAMPLE

2112 02 05 37 01 00
 Cod. prodotto / Product code Cod. modello / Model code Cod. colore led / Led colour code Cod. ottica / Lens code Cod. finitura / Finish code Alimentazione / Power supply

2112-01+1036-00



Accessorio soffitto: **103600**
Accessory ceiling fixing: **103600**



2113

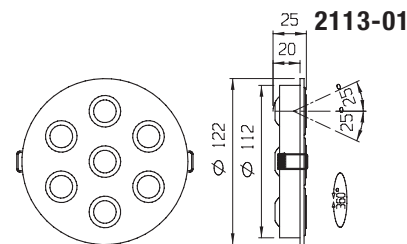
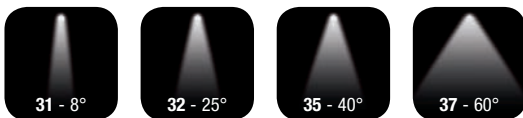
PRODOTTO / PRODUCT

ADJUSTABLE
SPOT
LIGHTS

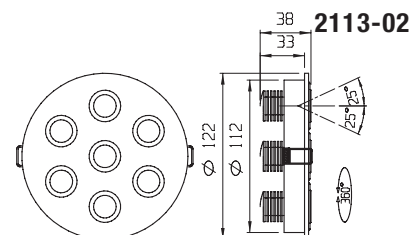
LEDS No.: 7



OTTICA / LENS



Diametro foro / Hole diameter **114-116 mm**
Fissaggio con molle / Fixing by springs
Accessorio installazione a soffitto **1036-00**
Ceiling installation kit **1036-00**



Diametro foro / Hole diameter **114-116 mm**
Fissaggio con molle / Fixing by springs
Accessorio installazione a soffitto **1036-00**
Ceiling installation kit **1036-00**



MODELLO MODEL	COLORE LED LED COLOUR	OTTICA LENS	FINITURA FINISH	ALIMENTAZIONE POWER SUPPLY	mA	Watt	Lm	Note
01 - Short	01 -	31 - 8°	01 -	00 - no driver	350	9	630	
	02 -	32 - 25°	05 -					
	03 -	35 - 40°						
	04 -	37 - 60°						
	05 -							
	06 -							
	08 -							
	09 -							
	02 - Long	01 -	31 - 8°	01 -	00 - no driver	350	9	630
02 -		32 - 25°	05 -	00 - no driver	500	13,3	832	
03 -		35 - 40°						
04 -		37 - 60°						
05 -								
06 -								
08 -								
09 -								

ESEMPIO COMPOSIZIONE CODICE
CODE COMPOSITION EXAMPLE

2113 01 03 35 05 00
 Cod. prodotto Model code
 Cod. colore led Led colour code
 Cod. ottica Lens code
 Cod. finitura Finish code
 Alimentazione Power supply

2113-01+1036-00



Accessorio soffitto: **103600**
Accessory ceiling fixing: **103600**



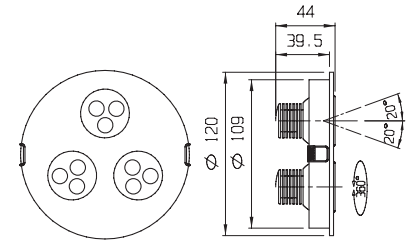
2114

PRODOTTO / PRODUCT

2114-02

ADJUSTABLE
SPOT
LIGHTS

LEDS No.: 9



Diametro foro / Hole diameter **110-111 mm**
Fissaggio con molle / Fixing by springs

OTTICA / LENS



MODELLO
MODEL

02 - Long

MODELLO MODEL	COLORE LED LED COLOUR	OTTICA LENS	FINITURA FINISH	ALIMENTAZIONE POWER SUPPLY	mA	Watt	Lm	Note
02 - Long	01 -	42 - 45°	01 -	00 - no driver	350	11,5	810	
	02 -		05 -					
	03 -							
	04 -							
	05 -							
	06 -							
	08 -							
	09 -							

ESEMPIO COMPOSIZIONE CODICE
CODE COMPOSITION EXAMPLE

2114 **02** **01** **42** **05** **00**
 Cod. prodotto Cod. modello Cod. colore led Cod. ottica Cod. finitura Alimentazione
 Product code Model code Led colour code Lens code Finish code Power supply

2115

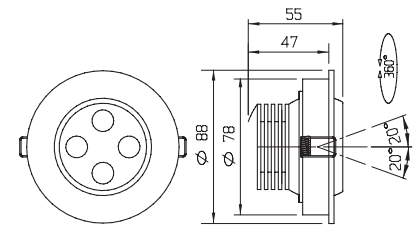
PRODOTTO / PRODUCT

ADJUSTABLE
SPOT
LIGHTS

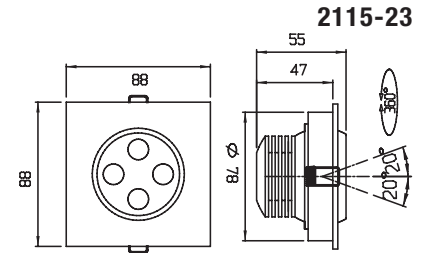
LEDS No.: 4



OTTICA / LENS



Diametro foro / Hole diameter **80-82 mm**
Fissaggio con molle / Fixing by springs



Diametro foro / Hole diameter **80-82 mm**
Fissaggio con molle / Fixing by springs



MODELLO
MODEL

02 - Long

MODELLO MODEL	COLORE LED LED COLOUR	OTTICA LENS	FINITURA FINISH	ALIMENTAZIONE POWER SUPPLY	mA	Watt	Lm	Note
02 - Long	01 -	31 - 8°	01 -	00 - no driver	350	5,1	360	
	02 -	32 - 25°	05 -	00 - no driver	500	7,6	475	
	03 -	35 - 40°		09 - 24 VDC	350	5,1	360	DIM
	04 -	37 - 60°		10 - 24 VDC	500	7,6	475	DIM
	05 -							
	06 -							
	08 -							
	09 -							

23 - Square

23 - Square	01 -	31 - 8°	01 -	00 - no driver	350	5,1	360	
	02 -	32 - 25°	05 -	00 - no driver	500	7,6	475	
	03 -	35 - 40°		09 - 24 VDC	350	5,1	360	DIM
	04 -	37 - 60°		10 - 24 VDC	500	7,6	475	DIM
	05 -							
	06 -							
	08 -							
	09 -							

ESEMPIO COMPOSIZIONE CODICE
CODE COMPOSITION EXAMPLE

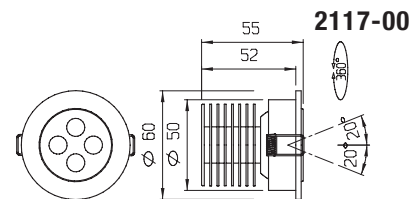
2115 02 04 31 01 10
 Cod. prodotto / Product code Cod. modello / Model code Cod. colore led / Led colour code Cod. ottica / Lens code Cod. finitura / Finish code Alimentazione / Power supply

2115-23



2117

PRODOTTO / PRODUCT



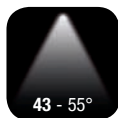
Diametro foro / Hole diameter **52-54 mm**
Fissaggio con molle / Fixing by springs

**ADJUSTABLE
SPOT
LIGHTS**

LEDS No.: 4



OTTICA / LENS



MODELLO MODEL	COLORE LED LED COLOUR	OTTICA LENS	FINITURA FINISH	ALIMENTAZIONE POWER SUPPLY	mA	Watt	Lm	Note
00 - Base	01 -	43 - 55°	01 -	00 - no driver	350	5,1	360	
	02 -		05 -					
	03 -							
	04 -							
	05 -							
	06 -							
	08 -							
	09 -							

ESEMPIO COMPOSIZIONE CODICE
CODE COMPOSITION EXAMPLE

